

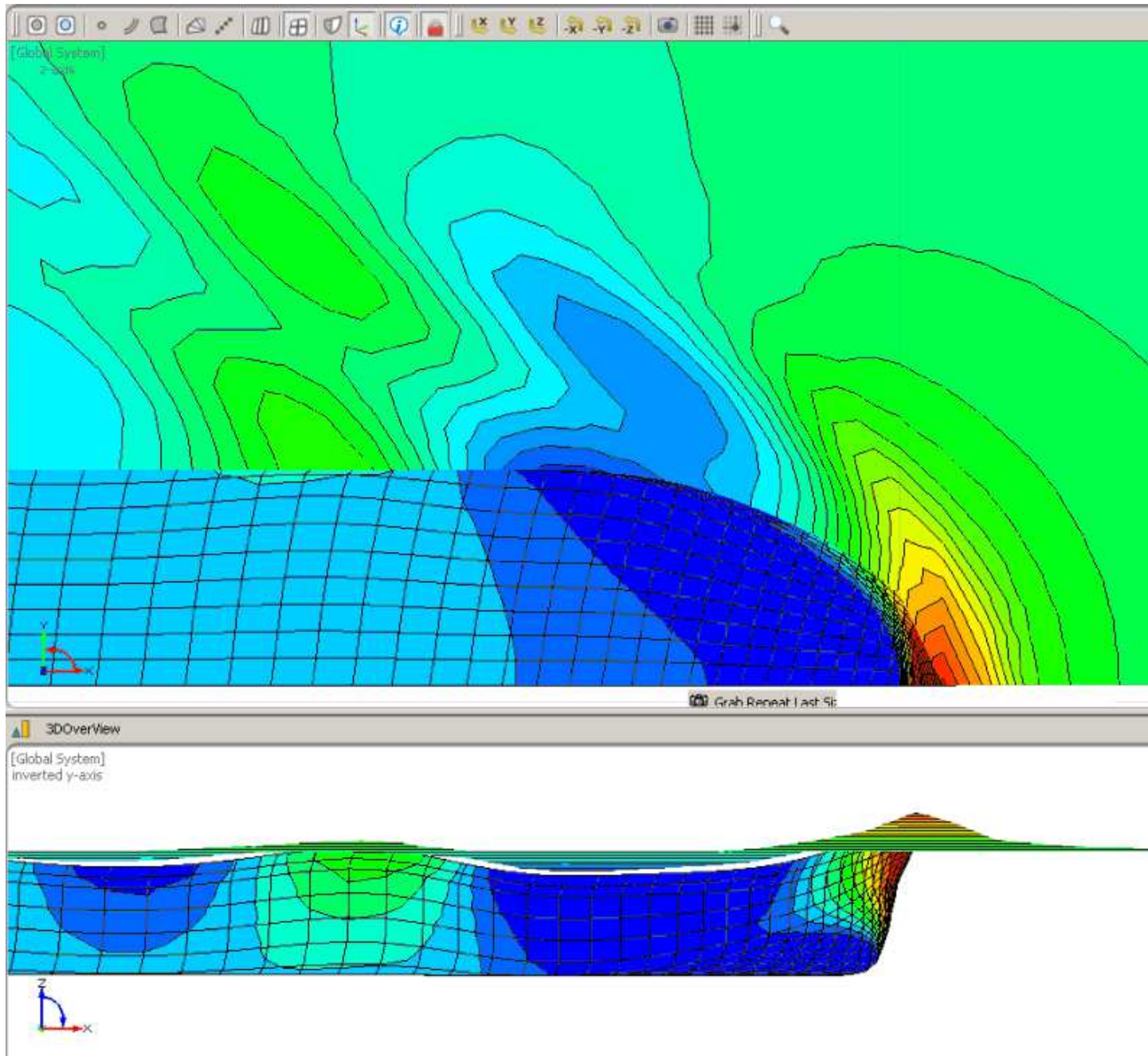
Large modification of bow type  
With  
Surface Delta Shift



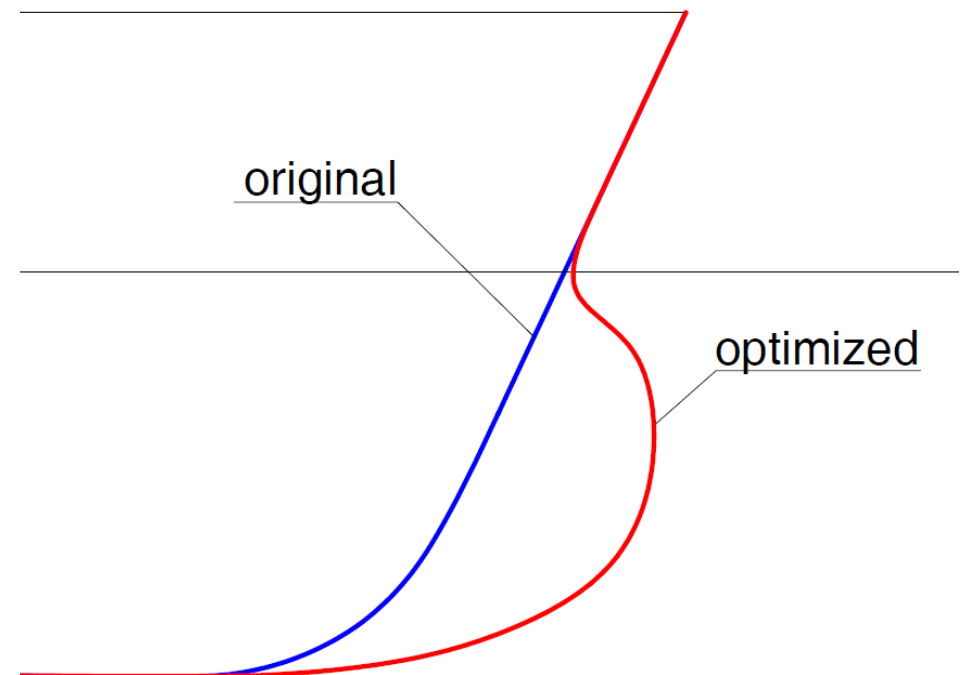
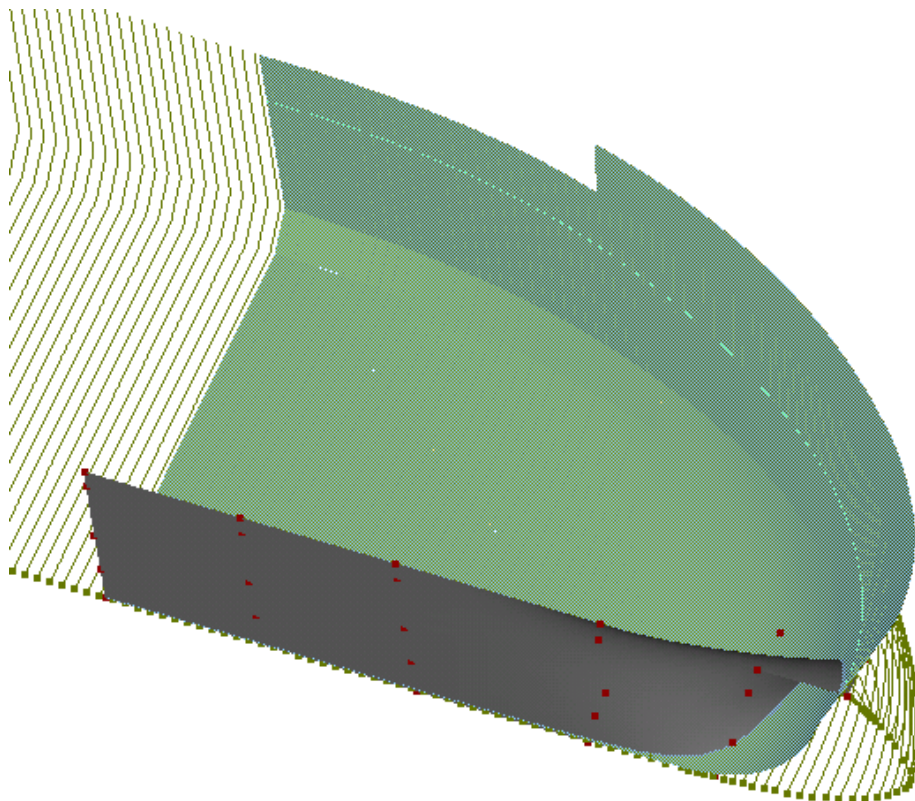
SHIPFLOW®  
a flowtech product

# SHIPFLOW FRIENDSHIP Design Package

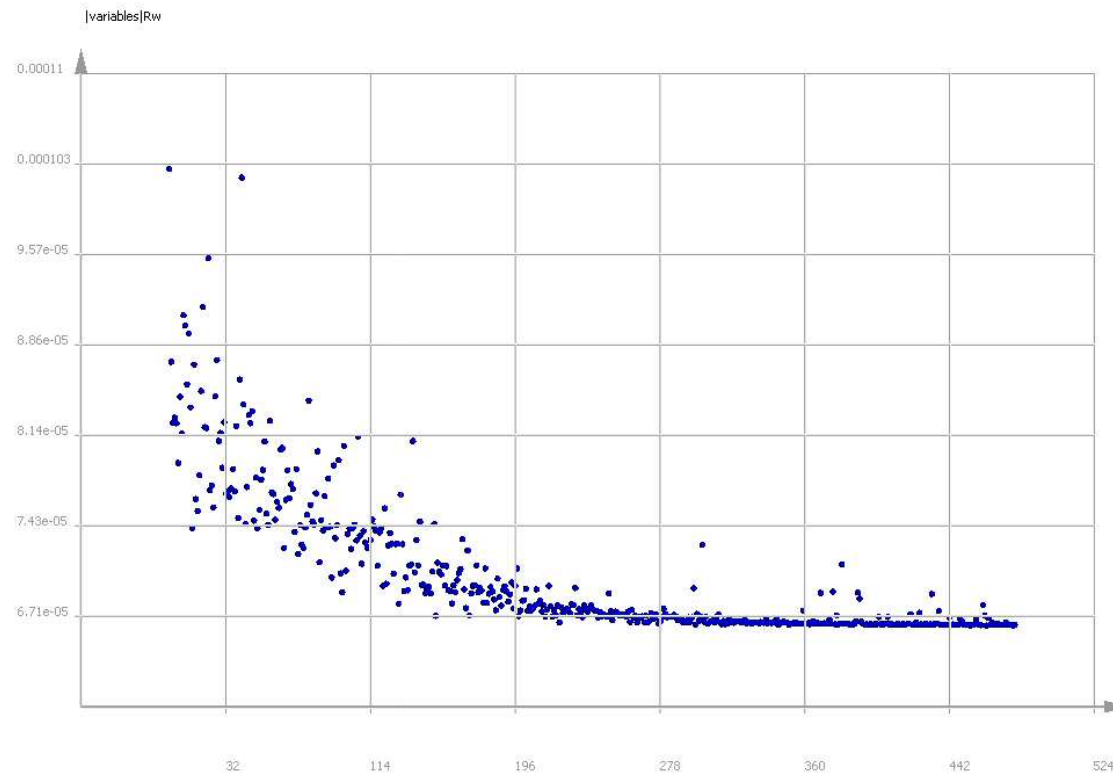
## Example - Fore body optimization



- Partially parametric modelling
  - Surface delta shift
    - Deviation from surface patch (grey) is applied to the hull
    - Design space allows for conventional and bulbous bow
    - Manageable number of control points (8)



- Multi-objective genetic algorithm NSGA II
  - To avoid being trapped in a local minima
  - Objective function is the wave resistance
    - Transverse wave cut technique
  - 400 variants were computed (potential flow code)



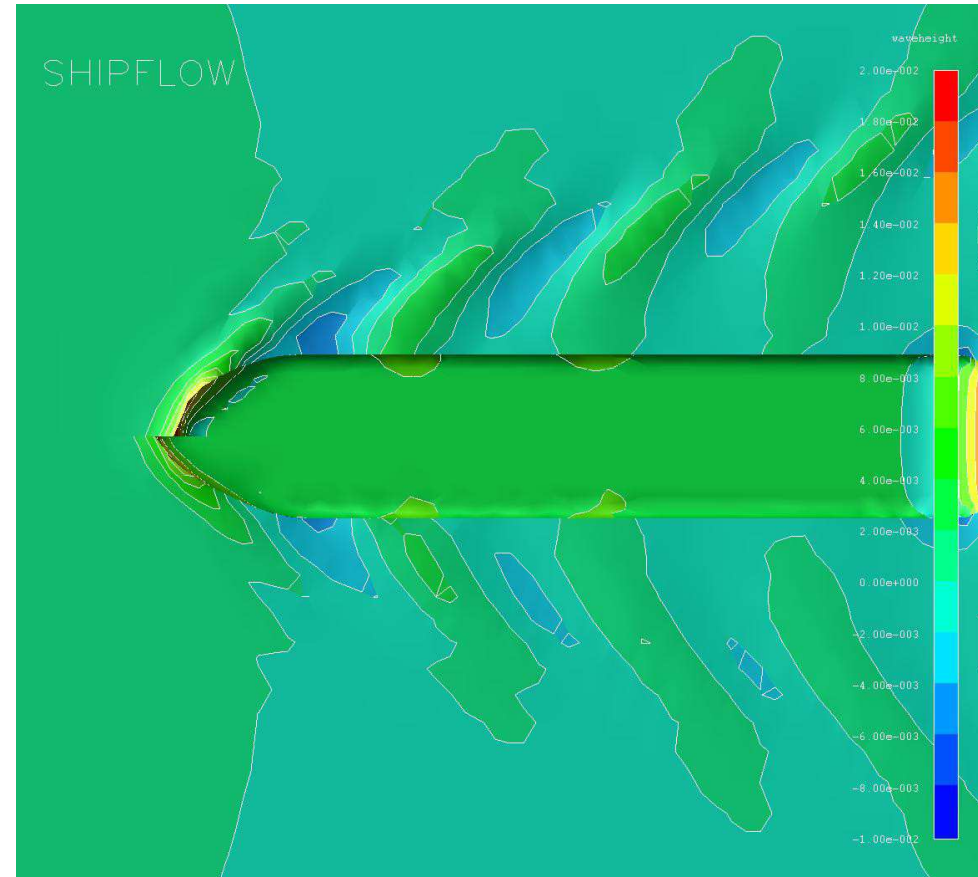
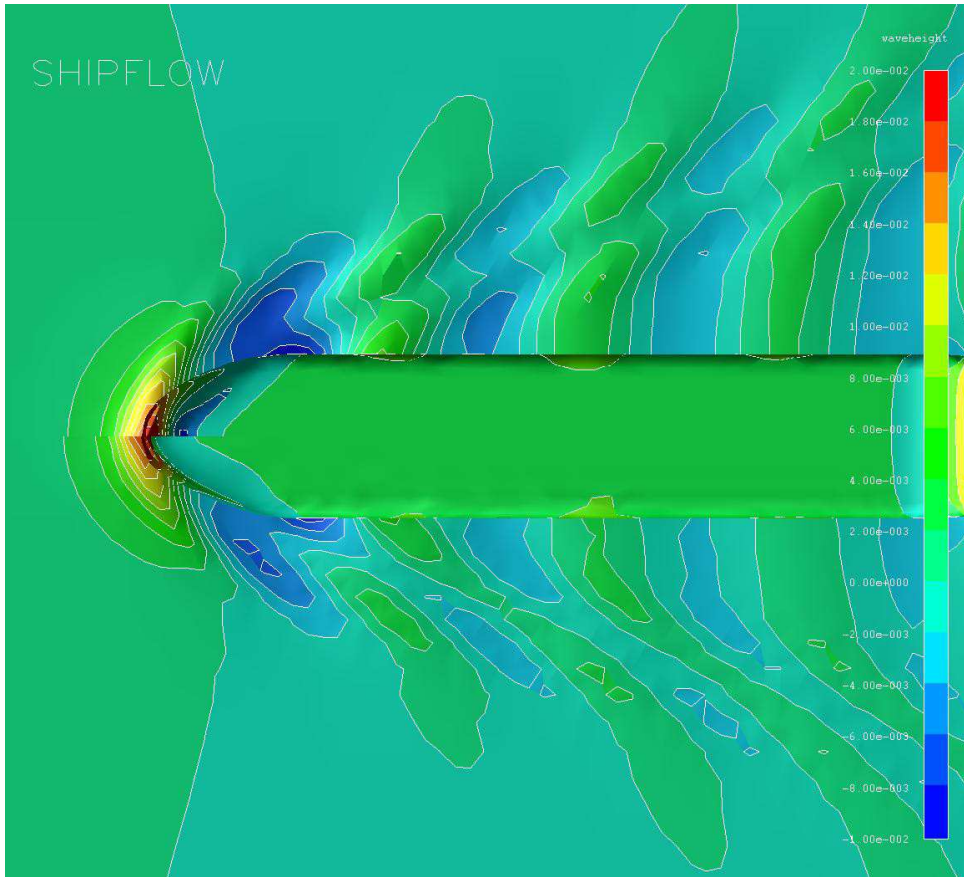
# SHIPFLOW FRIENDSHIP Design Package

## Example - Fore body optimization

Design Draft

Ballast Draft

Before



After